

45 North Contemporis 20 Merchants Road, Bristol, BS8 4HH

www.hydes.co.uk



45 North Contemporis 20 Merchants Road, Bristol, BS8 4HH

A superb three bedroom balcony apartment situated in the very heart of Clifton village offering a truly desirable combination of commodities including outside space, a passenger lift access and secure underground car parking. The property is offered for sale in show house condition providing an incoming purchaser with a turnkey experience.

The property provides some 1471 square feet (136 square meter) of internal space including an impressive 32'3 x 30' open plan kitchen/living/dining space that in turn opens directly onto a sizeable balcony complete with glass balustrade and professionally installed, low maintenance high quality decking. The beautifully fitted kitchen is comprehensively equipped to include two combination ovens (one with microwave function), a Blanco hot water tap, as well as a hob. Two of the bedrooms offer luxuriously appointed en-suite bath/shower rooms and a further guest/third bedroom has use of a separate cloakroom that cleverly incorporates a utility area. Ample storage space is provided by way of built in wardrobes to all of the bedrooms (the master bedroom having a dedicated dressing area) as well as a large entrance hall storage cupboard. The communal parts within North Contemporis are meticulously maintained under strict cleaning and service schedules resulting in excellent first impressions upon arrival. The passenger lift allows access to all floors within the development including directly to the underground car park.

In summary, this apartment offers the discerning purchaser maintenance and hassle free living within the very centre of Bristol's most fashionable and sought after suburb



3



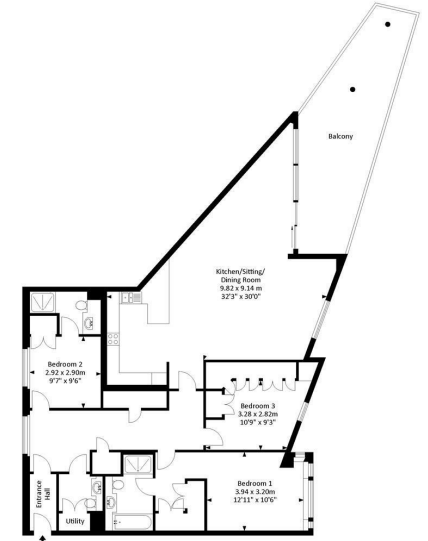
1



2

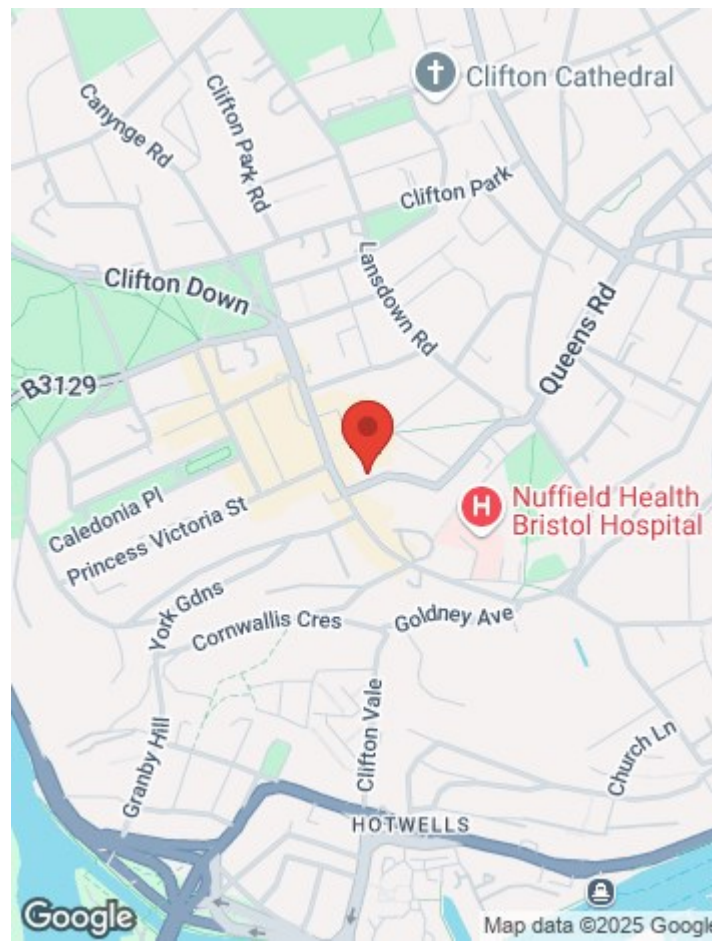
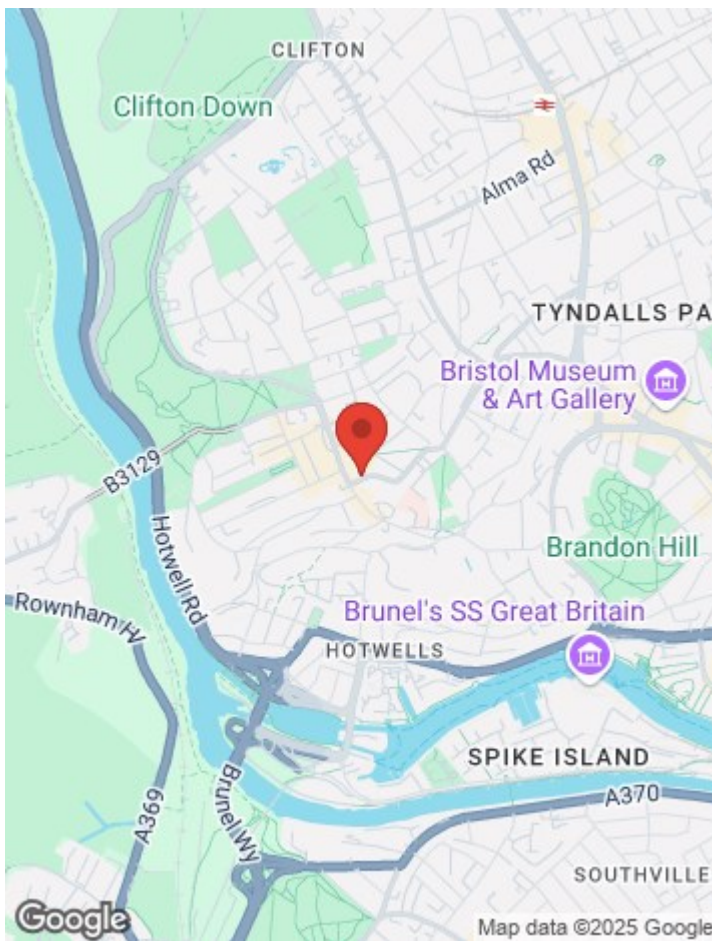


Approx. Gross internal Area
1471.00 Sq.Ft - 136.60 Sq.M



For illustrative purposes only. Not to scale.
Whilst every attempt has been made to ensure accuracy of the floor plan all measurements are approximate and no responsibility is taken for any error, omission or misstatement.
Floor plan produced by Westcountry EPC.





Energy Efficiency Rating		
	Current	Potential
Very energy efficient - lower running costs		
(92 plus) A		
(81-91) B		
(69-80) C		
(55-68) D		
(39-54) E		
(21-38) F		
(1-20) G		
Not energy efficient - higher running costs		
England & Wales	EU Directive 2002/91/EC	

Environmental Impact (CO ₂) Rating		
	Current	Potential
Very environmentally friendly - lower CO ₂ emissions		
(92 plus) A		
(81-91) B		
(69-80) C		
(55-68) D		
(39-54) E		
(21-38) F		
(1-20) G		
Not environmentally friendly - higher CO ₂ emissions		
England & Wales	EU Directive 2002/91/EC	

OTHER INFORMATION



28 Princess Victoria Street, Bristol, BS8 4BU
 Tel: 0117 973 1516
 post@hydes.co.uk | www.hydes.co.uk

IMPORTANT NOTE

Hydes Of Bristol and any joint agents give notice that (i) they have no authority to make or give representations or warranties in relation to the property. These particulars do not form part of any offer or contract and must not be relied upon as statements or representations of fact. (ii) Any areas, distances or measurements are approximate. The text, photographs and plans are for guidance only and are not necessarily comprehensive. It should not be assumed that the property has all the necessary planning, building regulations or other consents and Hydes Of Bristol have not tested any services, equipment or facilities. Purchasers must satisfy themselves by inspection or otherwise. (iii) In accordance with the consumer protection from unfair trading regulations, please note that the working condition of these services, or kitchen appliances has not been checked by the Agents but at the time of taking particulars we were informed that all were in working order. Please also note that current government legislation demands that as selling agents for this property, Hydes Of Bristol require written evidence of the origin/source of finance for funding for any prospective purchaser wishing to purchase this property. This confirmation shall be required prior to the vendor entering into any contract of sale and our instructions from the vendor are to this effect.